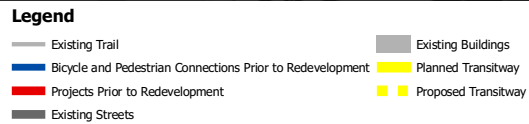
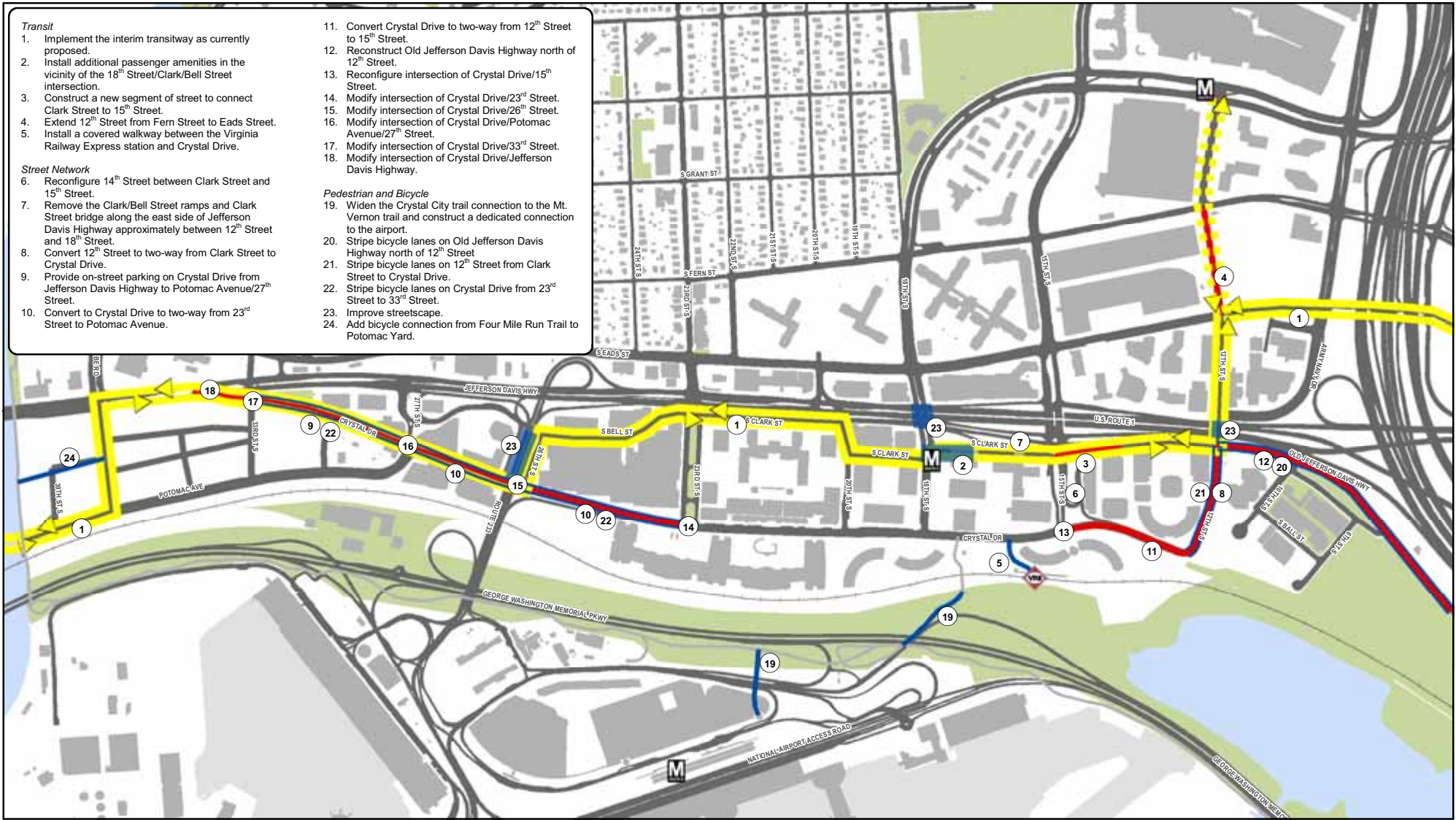


- Transit**
1. Implement the interim transitway as currently proposed.
  2. Install additional passenger amenities in the vicinity of the 18<sup>th</sup> Street/Clark/Bell Street intersection.
  3. Construct a new segment of street to connect Clark Street to 15<sup>th</sup> Street.
  4. Extend 12<sup>th</sup> Street from Fern Street to Eads Street.
  5. Install a covered walkway between the Virginia Railway Express station and Crystal Drive.

- Street Network**
6. Reconfigure 14<sup>th</sup> Street between Clark Street and 15<sup>th</sup> Street.
  7. Remove the Clark/Bell Street ramps and Clark Street bridge along the east side of Jefferson Davis Highway approximately between 12<sup>th</sup> Street and 18<sup>th</sup> Street.
  8. Convert 12<sup>th</sup> Street to two-way from Clark Street to Crystal Drive.
  9. Provide on-street parking on Crystal Drive from Jefferson Davis Highway to Potomac Avenue/27<sup>th</sup> Street.
  10. Convert to Crystal Drive to two-way from 23<sup>rd</sup> Street to Potomac Avenue.

11. Convert Crystal Drive to two-way from 12<sup>th</sup> Street to 15<sup>th</sup> Street.
12. Reconstruct Old Jefferson Davis Highway north of 12<sup>th</sup> Street.
13. Reconfigure intersection of Crystal Drive/15<sup>th</sup> Street.
14. Modify intersection of Crystal Drive/23<sup>rd</sup> Street.
15. Modify intersection of Crystal Drive/26<sup>th</sup> Street.
16. Modify intersection of Crystal Drive/Potomac Avenue/27<sup>th</sup> Street.
17. Modify intersection of Crystal Drive/33<sup>rd</sup> Street.
18. Modify intersection of Crystal Drive/Jefferson Davis Highway.

- Pedestrian and Bicycle**
19. Widen the Crystal City trail connection to the Mt. Vernon trail and construct a dedicated connection to the airport.
  20. Stripe bicycle lanes on Old Jefferson Davis Highway north of 12<sup>th</sup> Street
  21. Stripe bicycle lanes on 12<sup>th</sup> Street from Clark Street to Crystal Drive.
  22. Stripe bicycle lanes on Crystal Drive from 23<sup>rd</sup> Street to 33<sup>rd</sup> Street.
  23. Improve streetscape.
  24. Add bicycle connection from Four Mile Run Trail to Potomac Yard.

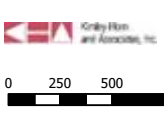
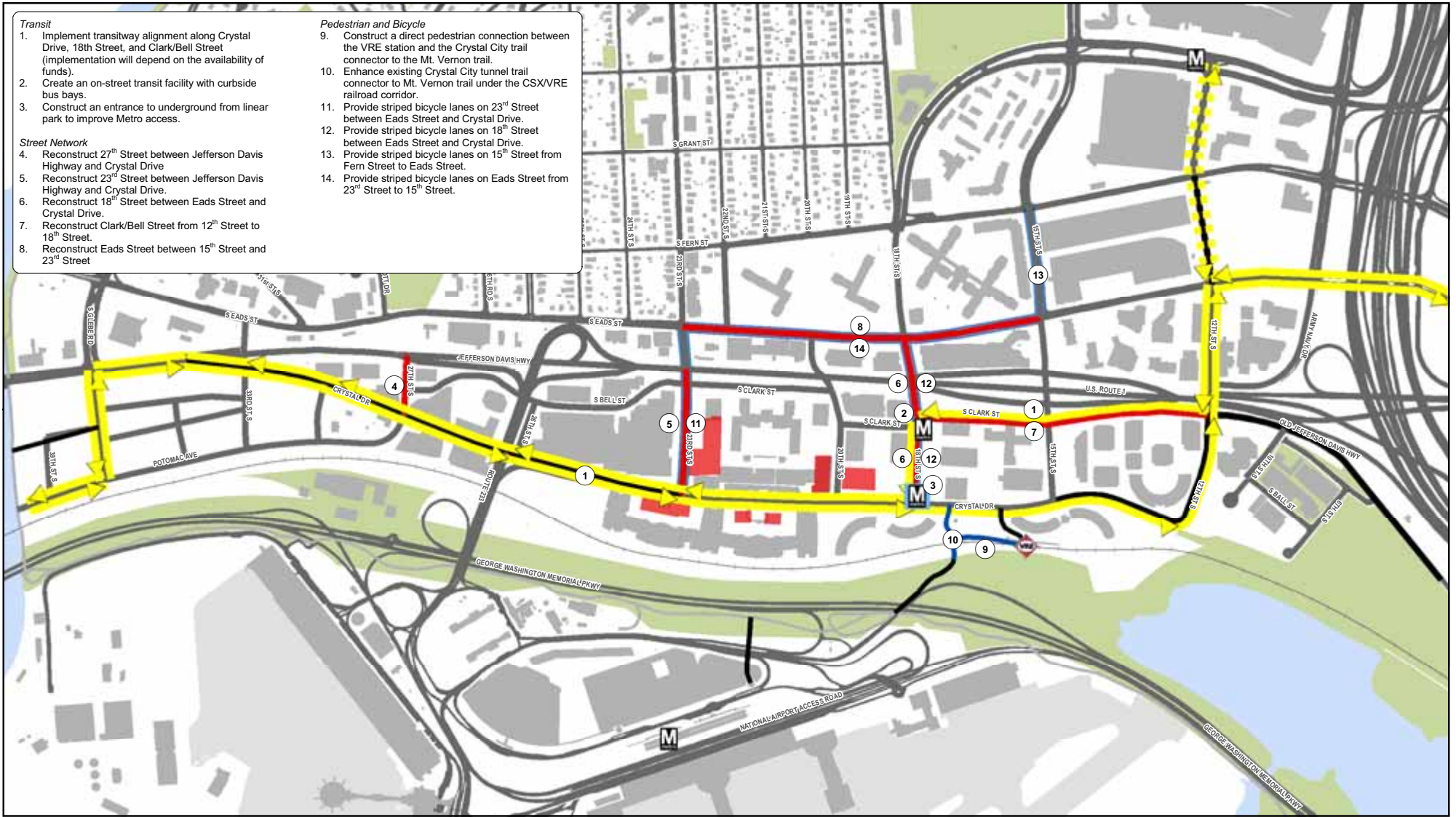


**CRYSTAL CITY MULTIMODAL TRANSPORTATION STUDY**  
**Transportation Modifications Prior to Redevelopment**  
**Figure 4.8**

- Transit**
1. Implement transitway alignment along Crystal Drive, 18th Street, and Clark/Bell Street (implementation will depend on the availability of funds).
  2. Create an on-street transit facility with curbside bus bays.
  3. Construct an entrance to underground from linear park to improve Metro access.

- Street Network**
4. Reconstruct 27<sup>th</sup> Street between Jefferson Davis Highway and Crystal Drive
  5. Reconstruct 23<sup>rd</sup> Street between Jefferson Davis Highway and Crystal Drive.
  6. Reconstruct 18<sup>th</sup> Street between Eads Street and Crystal Drive.
  7. Reconstruct Clark/Bell Street from 12<sup>th</sup> Street to 18<sup>th</sup> Street.
  8. Reconstruct Eads Street between 15<sup>th</sup> Street and 23<sup>rd</sup> Street

- Pedestrian and Bicycle**
9. Construct a direct pedestrian connection between the VRE station and the Crystal City trail connector to the Mt. Vernon trail.
  10. Enhance existing Crystal City tunnel trail connector to Mt. Vernon trail under the CSX/VRE railroad corridor.
  11. Provide striped bicycle lanes on 23<sup>rd</sup> Street between Eads Street and Crystal Drive.
  12. Provide striped bicycle lanes on 18<sup>th</sup> Street between Eads Street and Crystal Drive.
  13. Provide striped bicycle lanes on 15<sup>th</sup> Street from Fern Street to Eads Street.
  14. Provide striped bicycle lanes on Eads Street from 23<sup>rd</sup> Street to 15<sup>th</sup> Street.



**Legend**

- Phase 1 Projects
- Previous Phase Projects
- Existing Streets

- Metro Second Entrance
- Phase 1 Redevelopment
- Existing Buildings

- Existing Trail
- Previous Phase Bicycle and Pedestrian Connections
- Phase 1 Bicycle and Pedestrian Connections

- Planned Transitway
- Proposed Transitway

**CRYSTAL CITY MULTIMODAL TRANSPORTATION STUDY**

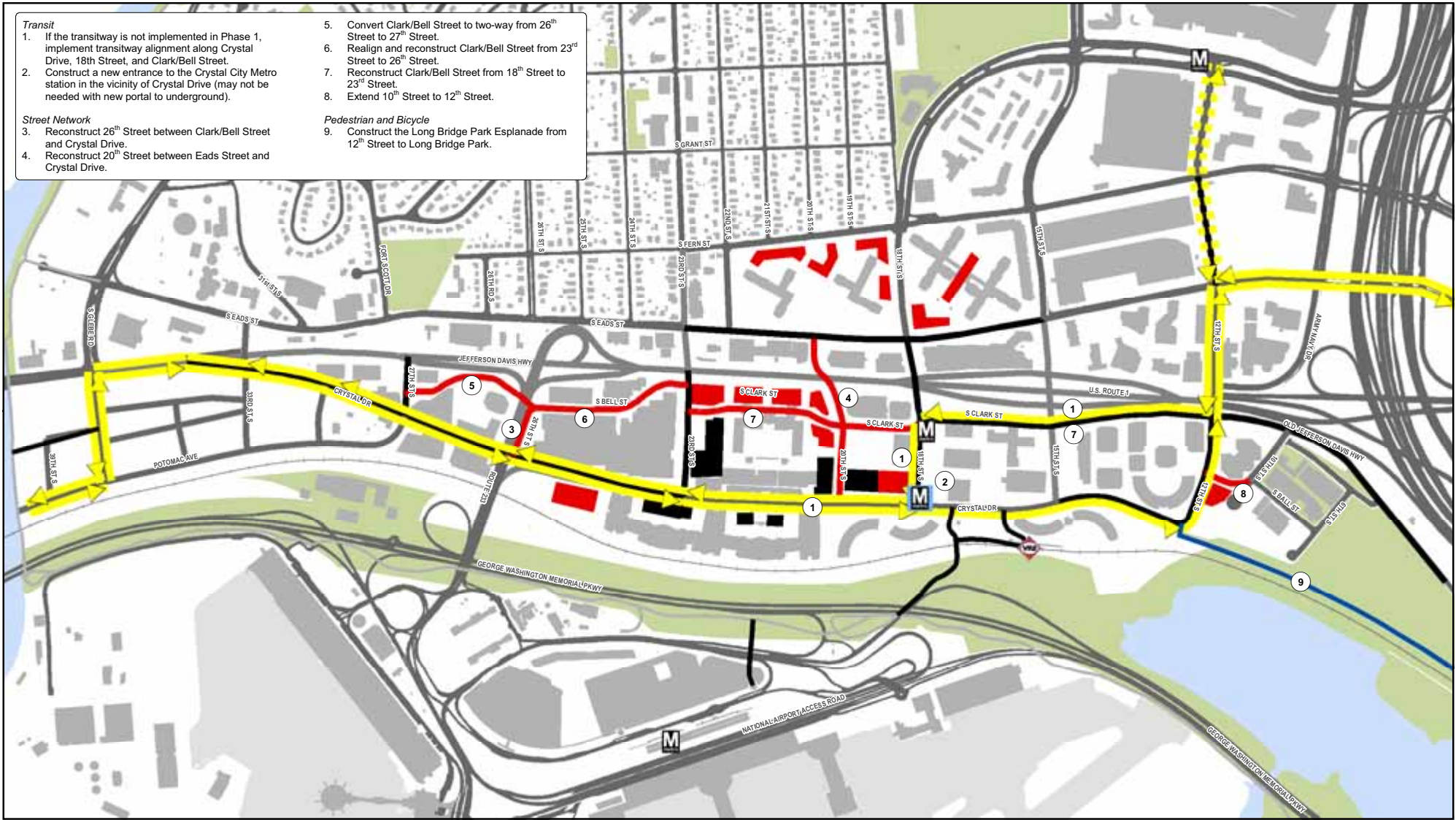
**Phase 1 Transportation Improvements (2011 to 2015)**

\* Implementation of Phase 1 transitway is dependent on the availability of funding

**Figure 4.9**

- Transit**
1. If the transitway is not implemented in Phase 1, implement transitway alignment along Crystal Drive, 18th Street, and Clark/Bell Street.
  2. Construct a new entrance to the Crystal City Metro station in the vicinity of Crystal Drive (may not be needed with new portal to underground).
- Street Network**
3. Reconstruct 26<sup>th</sup> Street between Clark/Bell Street and Crystal Drive.
  4. Reconstruct 20<sup>th</sup> Street between Eads Street and Crystal Drive.

5. Convert Clark/Bell Street to two-way from 26<sup>th</sup> Street to 27<sup>th</sup> Street.
  6. Realign and reconstruct Clark/Bell Street from 23<sup>rd</sup> Street to 26<sup>th</sup> Street.
  7. Reconstruct Clark/Bell Street from 18<sup>th</sup> Street to 23<sup>rd</sup> Street.
  8. Extend 10<sup>th</sup> Street to 12<sup>th</sup> Street.
- Pedestrian and Bicycle**
9. Construct the Long Bridge Park Esplanade from 12<sup>th</sup> Street to Long Bridge Park.



- Legend**
- Phase 2 Projects (Red line)
  - Phase 2 Redevelopment (Red area)
  - Existing Trail (Grey line)
  - Previous Phase Projects (Black line)
  - Previous Phase Redevelopment (Black area)
  - Previous Phase Bicycle and Pedestrian Connections (Black line)
  - Phase 2 Bicycle and Pedestrian Connections (Blue line)
  - Existing Streets (Grey line)
  - Existing Buildings (Grey area)
  - Planned Transitway (Yellow line)
  - Proposed Transitway (Dashed Yellow line)
  - Metro Second Entrance\* (Blue icon)

**CRYSTAL CITY MULTIMODAL TRANSPORTATION STUDY**

**Phase 2 Transportation Improvements (2016 to 2020)**

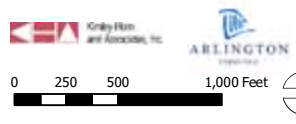
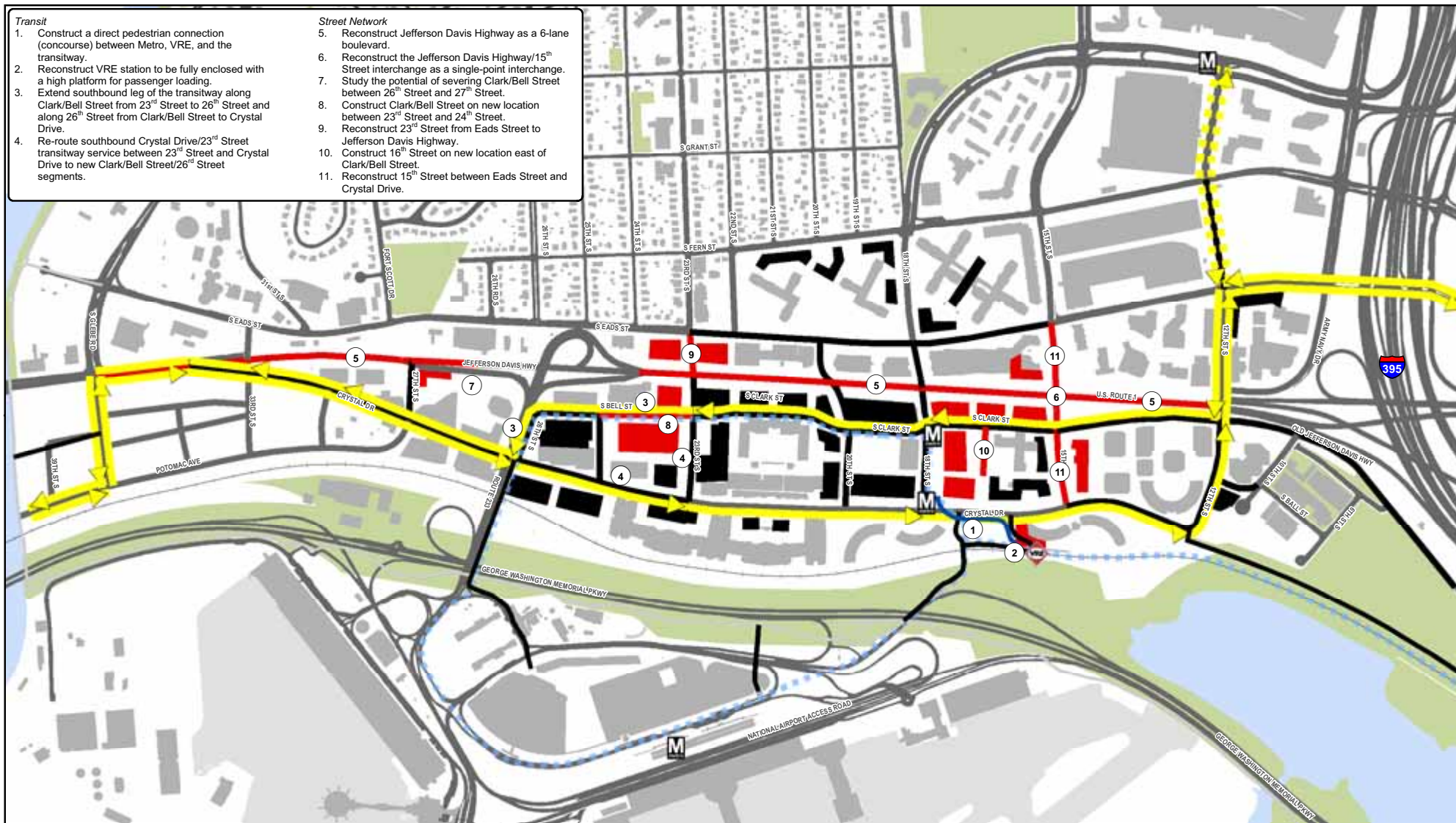
\* Second Metro Entrance may not be necessary in this phase with entrance to Underground from 18th Street Plaza in place

**Figure 4.10**



- Transit**
1. Construct a direct pedestrian connection (concourse) between Metro, VRE, and the transitway.
  2. Reconstruct VRE station to be fully enclosed with a high platform for passenger loading.
  3. Extend southbound leg of the transitway along Clark/Bell Street from 23<sup>rd</sup> Street to 26<sup>th</sup> Street and along 26<sup>th</sup> Street from Clark/Bell Street to Crystal Drive.
  4. Re-route southbound Crystal Drive/23<sup>rd</sup> Street transitway service between 23<sup>rd</sup> Street and Crystal Drive to new Clark/Bell Street/26<sup>th</sup> Street segments.

- Street Network**
5. Reconstruct Jefferson Davis Highway as a 6-lane boulevard.
  6. Reconstruct the Jefferson Davis Highway/15<sup>th</sup> Street interchange as a single-point interchange.
  7. Study the potential of severing Clark/Bell Street between 26<sup>th</sup> Street and 27<sup>th</sup> Street.
  8. Construct Clark/Bell Street on new location between 23<sup>rd</sup> Street and 24<sup>th</sup> Street.
  9. Reconstruct 23<sup>rd</sup> Street from Eads Street to Jefferson Davis Highway.
  10. Construct 16<sup>th</sup> Street on new location east of Clark/Bell Street.
  11. Reconstruct 15<sup>th</sup> Street between Eads Street and Crystal Drive.



**Legend**

- Phases 4 Projects
- Previous Phase Projects
- Existing Streets
- Phase 4 Redevelopment
- Previous Phase Redevelopment
- Existing Buildings
- Existing Trail
- Previous Phase Bicycle and Pedestrian Connections
- Phase 4 Bicycle and Pedestrian Connections
- Planned Transitway
- Fixed Guideway Transit Study (previous phase)
- Proposed Transitway

**CRYSTAL CITY MULTIMODAL TRANSPORTATION STUDY**

**Phase 4 Transportation Recommendations (2031 to 2040)**

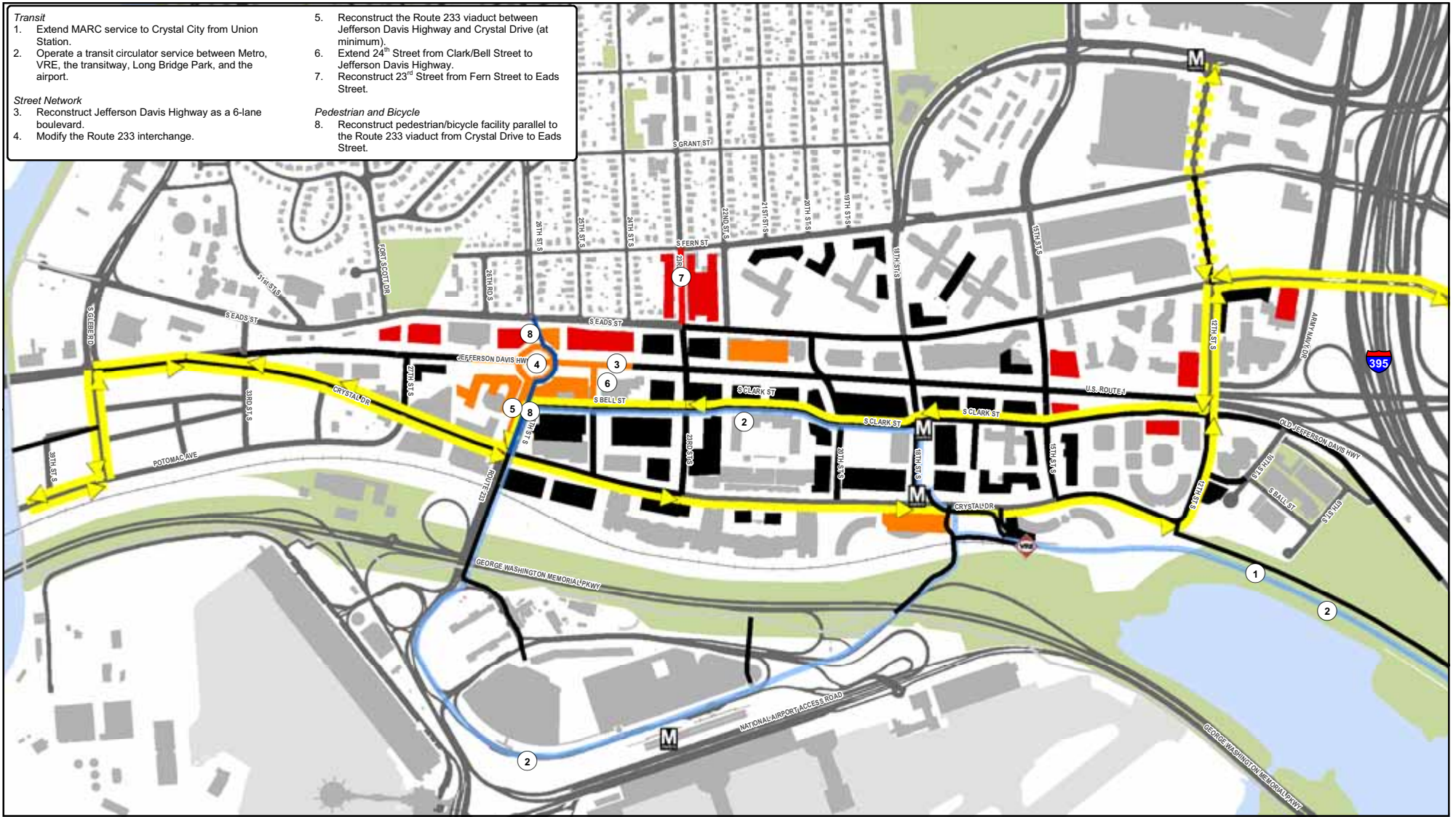
**Figure 4.12**

- Transit**
1. Extend MARC service to Crystal City from Union Station.
  2. Operate a transit circulator service between Metro, VRE, the transitway, Long Bridge Park, and the airport.

- Street Network**
3. Reconstruct Jefferson Davis Highway as a 6-lane boulevard.
  4. Modify the Route 233 interchange.

5. Reconstruct the Route 233 viaduct between Jefferson Davis Highway and Crystal Drive (at minimum).
6. Extend 24<sup>th</sup> Street from Clark/Bell Street to Jefferson Davis Highway.
7. Reconstruct 23<sup>rd</sup> Street from Fern Street to Eads Street.

- Pedestrian and Bicycle**
8. Reconstruct pedestrian/bicycle facility parallel to the Route 233 viaduct from Crystal Drive to Eads Street.



- Legend**
- Phase 5 Projects (Red outline)
  - Projects Beyond Phase 5 (Orange outline)
  - Previous Phase Projects (Black outline)
  - Existing Streets (Grey line)
  - Phase 5 Redevelopment (Red fill)
  - Redevelopment Beyond Phase 5 (Orange fill)
  - Previous Phase Redevelopment (Black fill)
  - Existing Buildings (Grey fill)
  - Existing Trail (Thin grey line)
  - Previous Phase Bicycle and Pedestrian Connections (Black line)
  - Phase 5 and Beyond Bicycle, Pedestrian, and Transit Connections (Blue line)
  - Fixed Gateway Circulator (potential) (Blue line with arrows)

**CRYSTAL CITY MULTIMODAL TRANSPORTATION STUDY**

**Phase 5 and Beyond Transportation Recommendations (2041 to 2050 and Beyond)**

- Planned Transitway (Yellow line)
- Proposed Transitway (Yellow dashed line)

**Figure 4.13**